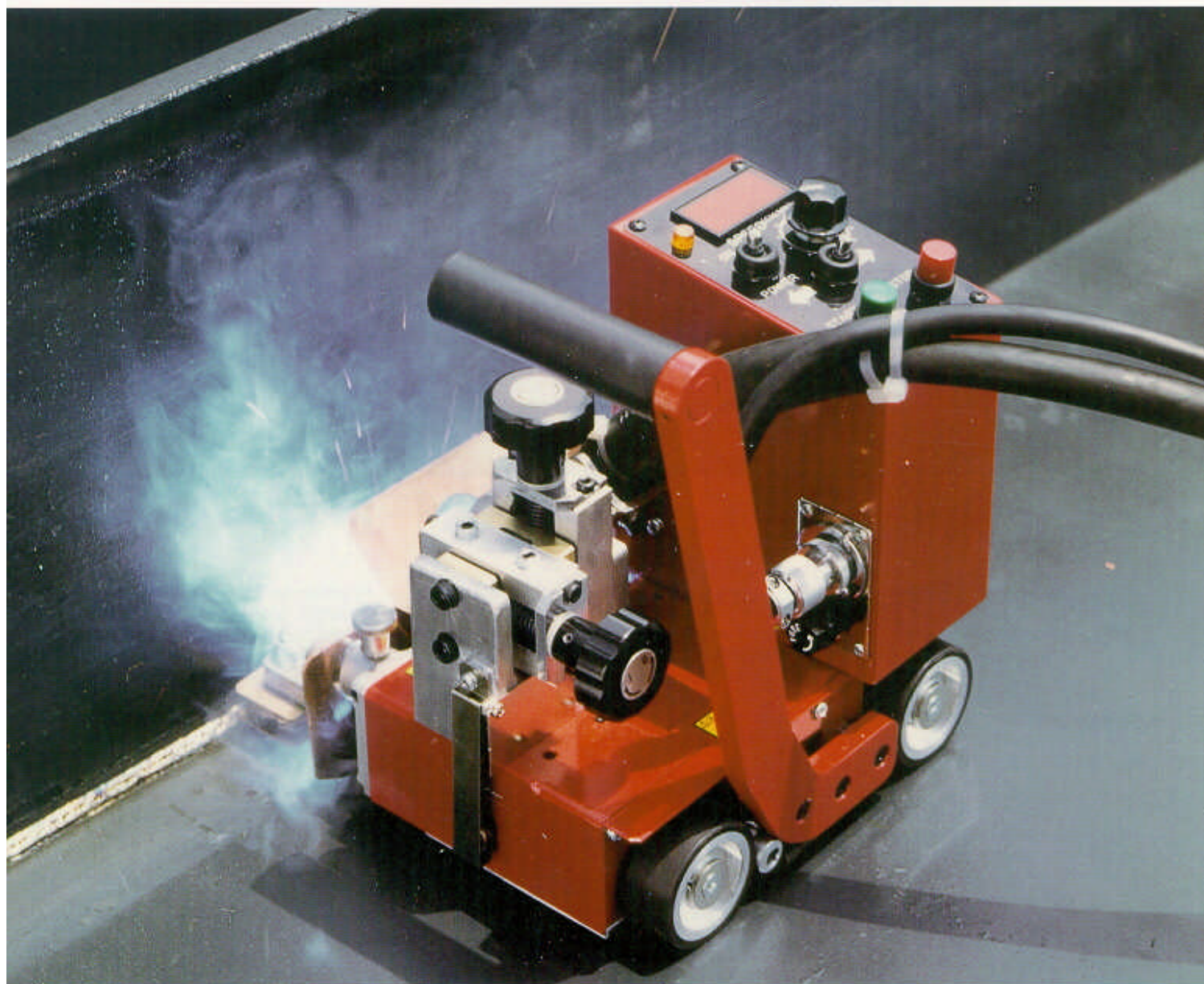


KOIKE HIGH-PERFORMANCE/COMPACT HORIZONTAL FILLET WELDING CARRIAGE

# WEL-HANDY-MINI



The KOIKE/WEL-HANDY-MINI is an ultra-compact traveling welding carriage that provides the best power and functionality available in its class.

It is so simple to use that anyone can operate it. And its excellent traction power and functionality help to greatly simplify and reduce costs in horizontal fillet welding operations for applications such as shipbuilding, bridge construction, and steel frame assembly.

■ **Ultra-compact**

The welding carriage is very light: it weighs only 7kg. This makes it easy to carry.

■ **6mm gap between base of carriage and plate being welded**

The gap helps the carriage move smoothly, preventing it from being caught by the welding beads or other factors.

■ **16kg traction power**

The carriage can easily climb 45° degree slope and its excellent staying power enables a single person to handle multiple carriages.

■ **Perfect for working in tight places**

The WEL-HANDY-MINI can perform automatic welding in spaces as narrow as 240mm.

■ **Also ideal for vertical welding (downward direction)**

If there is a 100 mm protrusion at the base of the panel being welded, the bottom of the carriage can cling

to a vertical panel and travel along it, performing fillet welding. (The bottom of the carriage incorporates a permanent magnet.)

■ **Travel direction switchable for left and right**

Changing between travel in the left and right directions is as simple as changing the setting of the guide roller [out/in] selector lock screw. It is also possible to make auto-stop settings for both travel directions as required.

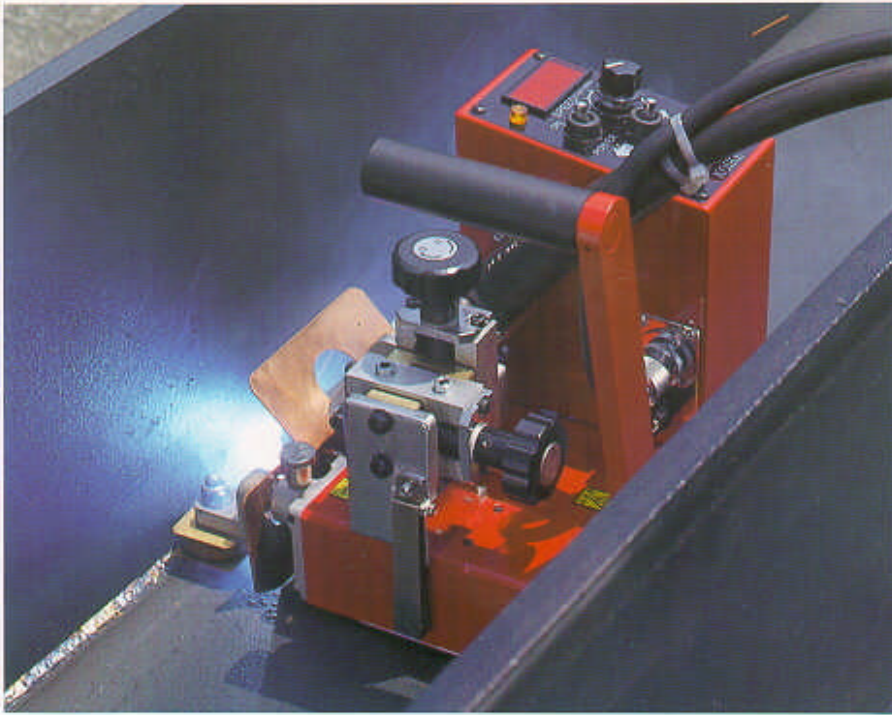
■ **Digital speed display**

The display provides a digital readout, which makes it easier to set and check the speed accurately.

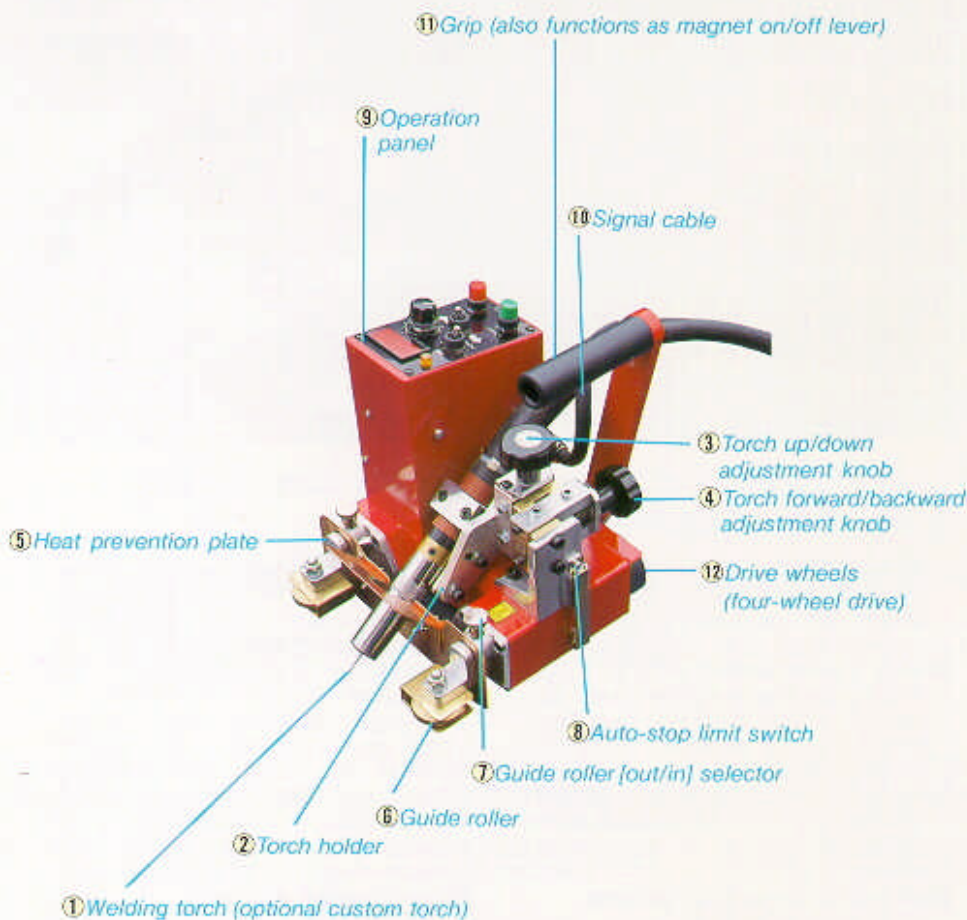
**KOIKE** 9Y2-60A30-2



# WEL-HANDY-MINI



## Standard configuration and features of the welding carriage



### Welding torch ①

Though a standard straight torch may be used, a shorter custom straight torch that allows the user to take full advantage of the compact welding carriage is available as an option.



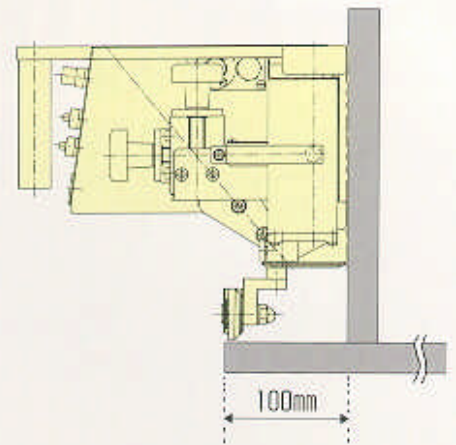
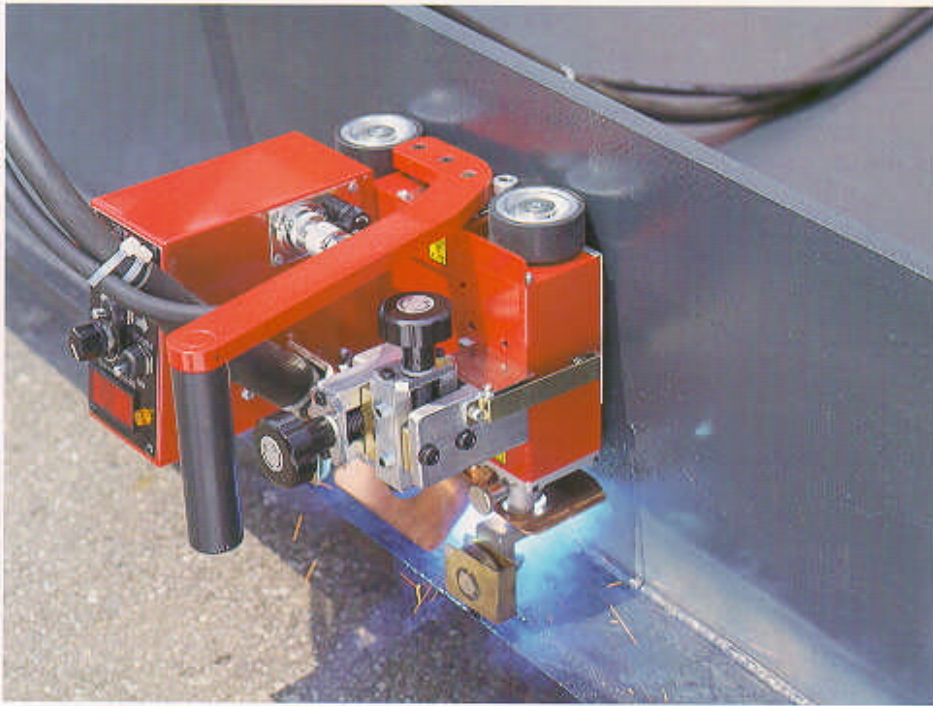
### Torch holder ②

This holder is designed for use with straight torches. The angle may be adjusted between 40 and 60 degrees. This allows the welding carriage to be used for heavy plate bevel welding.

■ Torch up-down adjustment knob ③  
 ■ Torch front-rear adjustment knob ④  
 These knobs allow fine adjustment with in a range of 33 mm.

■ Heat prevention plate ⑤  
 This plate protects the welding carriage and its internal electric system from the heat of the welding arc and spatter.

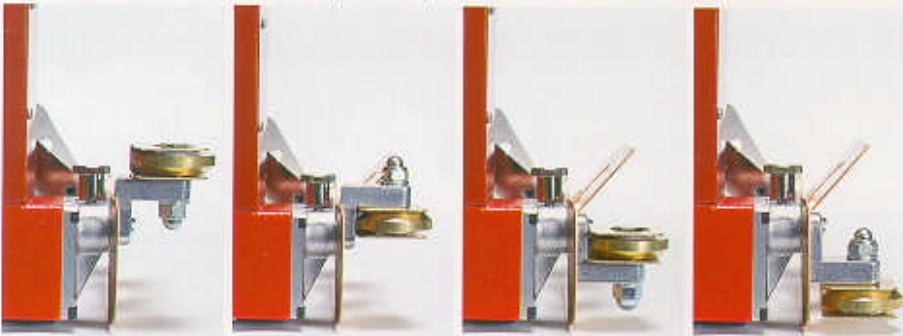




■ **Guide rollers ⑥**

To meet a wide range of requirements, the tracking height can be adjusted to 12mm, 41mm, 57mm, or 81mm simply by changing the guide rollers.

Since vertical travel is also possible,



the guide rollers have a sturdy design that can easily withstand the weight of the welding carriage. This also means that the performance of the welding carriage is not affected by spatter.

■ **Operation panel ⑨**

The switches on the operation panel make it easy to control the welding carriage.

- Power switch: Light on lamp (ON).
- Start switch: Starts travel and welding.
- Stop switch: Stops travel and welding.
- Travel direction selector switch
- Speed adjustment dial: With digital indicator panel.

■ **Signal cable ⑩**

This cable connects the welding carriage to the wire feeder and power supply. The single cable branches into two separate cords, one to the power supply (100V, AC) and the other to the wire feeder. The other end is linked to the operation panel of the welding carriage. (The cable is compatible with wire feeders from various manufacturers.)

■ **Guide roller [out/in] selector ⑦**

To allow the welding carriage to travel freely to the right and the left, this selector is provided to control the in / out operation of the guide rollers.



■ **Auto-stop limit switches ⑧**

The welding carriage is also equipped with dual limit switches, one on each end, to enable travel in both the right and the left directions, without any risk of collision.



■ **Grip (also functions as magnet on/off lever) ⑪**

This functions as a grip for carrying the welding carriage and as the magnet on / off lever when the carriage is operating.

■ **Drive Wheels ⑫**

The welding carriage is equipped with a powerful four-wheel drive system that is protected from spatter by a heat insulating plate. The rubber wheels provide smooth slip-free travel.

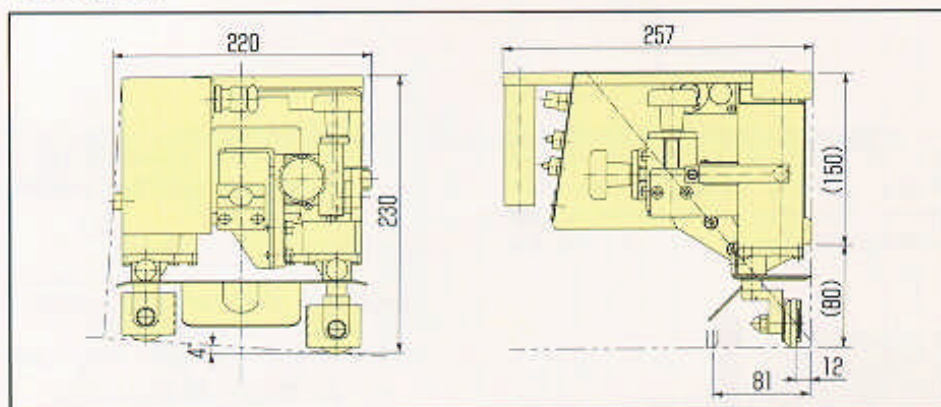


# WEL-HANDY-MINI

## Specifications

Weight	7kg (main body)
Tractive pull power	16kg (with 6mm gap between base of carriage and plate being welded) Travelling speed 400mm/min.
Drive method	Magnet attraction, rubber roller 4-wheel drive
Travelling speed	10~100cm/min.
Tracking method	Guide roller vertical panel tracking(when horizontal)
Guide roller height	12mm, 41mm, 57mm, 81mm(changed by replacing rollers)
Torch holder (with adjustment unit)	Torch angle :40°~60°
	Up-down adjustment :33mm
	Front rear adjustment :33mm
	For custom straight torch (standard), other available as options
Operation panel switch (mounted on carriage)	1) Power 2) Start 3) stop 4) Travelling direction selector 5) Speed adjustment 6) Power lamp
Speed meter	LCD (LED) digital display
Auto-stop function	Limit switches mounted on both side of carriage
Distance left unwelded	110mm (at both start and end)
Power source	AC 100V, 50/60Hz

## Dimensions



## Option

- Custom straight torch  
model :WHM-500S-M  
WHM-350S-M